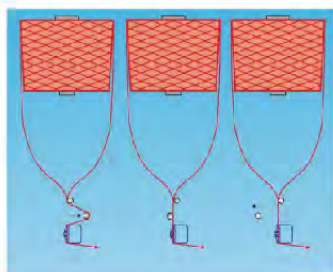


大V形筒子架

Big V Creel

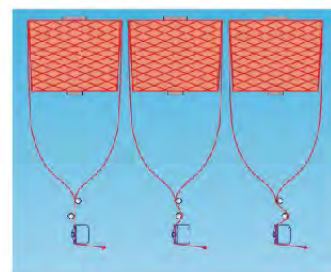


不会产生松纱

- 自动预张力器可防止会产生机器停机的松纱现象。预张力器可根据整经过程中的不同阶段自动调整到正确位置。

No snarlign

- Pretensioner can prevent yarn loosen when machine stopped. Pretensioner can adjust automatically to the correct position according to different warping stages.



纱线张力得以平衡

- 预张力器可自动平衡从最后端到最前端纱线不同长度产生的张力差别。调整预张力器的包角得以补偿。

Equalized thread tension


- The presioner auto compensate the thread tension differences occuring due to the variation in thread length from the rearmost to foremost package. The auto pretensioner is set so that a corresponding warp compensates the differences in tension between the front and rear threads.


江阴市华方新技术科研有限公司

JIANGYIN HUAFANG NEW TECHNOLOGY & SCIENTIFIC RESEARCH CO.,LTD.

 江苏省江阴市周庄镇长寿西张路11号
11# Xizhang Road, Changshou, Zhouzhuang Town, Jiangyin City, Jiangsu Province

 137 0616 1133

 0510-86366213

 0510-86366212

 zzj@h-fang.com

 www.h-fang.com



高质量

- 停机时松纱或飞纱
- 按下按钮可激活纱线检测器
- 多次断纱警告显示
- 不断显示纱线数目
- 断经时不会丢纱

High quality

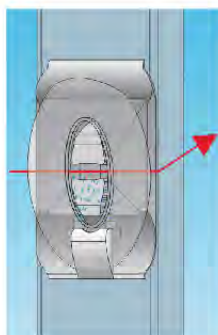
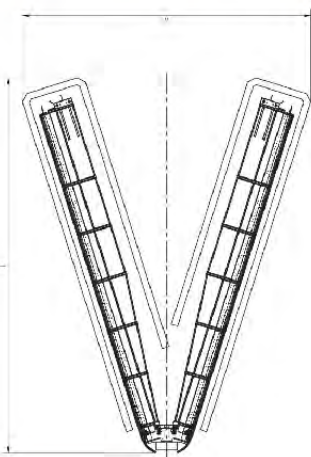
- No yarn loosen when machine stopped
- Activate yarn detector by pushing button
- Multi-breakage warning displayed
- Continuous displaying number of running ends
- No yarn lost when yarn broken

高产能

- 应用范围广
- 高速运行时纱线张力较低
- 快速识别断经位置

High productivity

- Wide application range
- Low yarn tension at high speed
- Fast identify breakage position



内置独立吹气装置

- 在每个张力器中均有细小的喷嘴，以一定的时间间隔喷出压缩空气，使张力器周围环境保持清洁。

Internal individual blowing device

- Fine nozzle in every tensioner keep tensioner zone clean by blowing compressed air in certain time.

筒子架尺寸参数

Creel dimension

列距 (mm) Horizontal pitch	层距 (mm) Vertical pitch	最大筒纱直径 (mm) Max. bobbin diameter	层数 Number of layers	锭数 Number of bobbin											
240	240	230	9	504	576	648	720	792	864	936	1008	1080	1152	1224	1296
	270	255	8	448	512	576	640	704	768	832	896	960	1024	1088	1152
	305	265	7	392	448	504	560	616	672	728	784	840	896	952	1008
	350	278	6	384	432	480	528	576	624	672	720	768	816	864	
	435	305	5	320	360	400	440	480	520	560	640	640	680	720	
列数 Number of columns				28	32	36	40	44	48	52	56	60	64	68	72

L 总长度 (mm) Total length				8730	9703	10561	11534	12392	13365	14223	15196	16055	17027	17886	18858
W 总宽度 (mm) Total width				7392	8006	8547	9160	9702	10315	10856	11470	12011	12625	13166	13779

列距 (mm) Horizontal pitch	层距 (mm) Vertical pitch	最大筒纱直径 (mm) Max. bobbin diameter	层数 Number of layers	锭数 Number of bobbin											
320	240	230	9	378	432	486	540	594	648	702	756	810	864	918	972
	270	260	8	336	384	432	480	528	576	624	672	720	768	816	864
	305	295	7	336	378	420	462	504	546	588	630	672	714	756	
	350	340	6	324	360	396	432	468	504	540	576	612	648		
	435	365	5	300	330	360	390	420	450	480	510	540			
列数 Number of columns				21	24	27	30	33	36	39	42	45	48	51	54